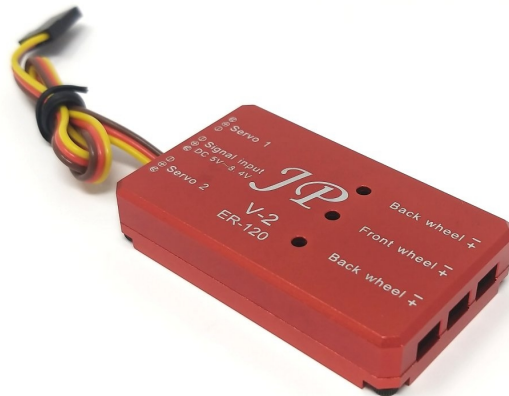


JPHobby ER-120 V2 Sequencer Retract

Instructions Manual

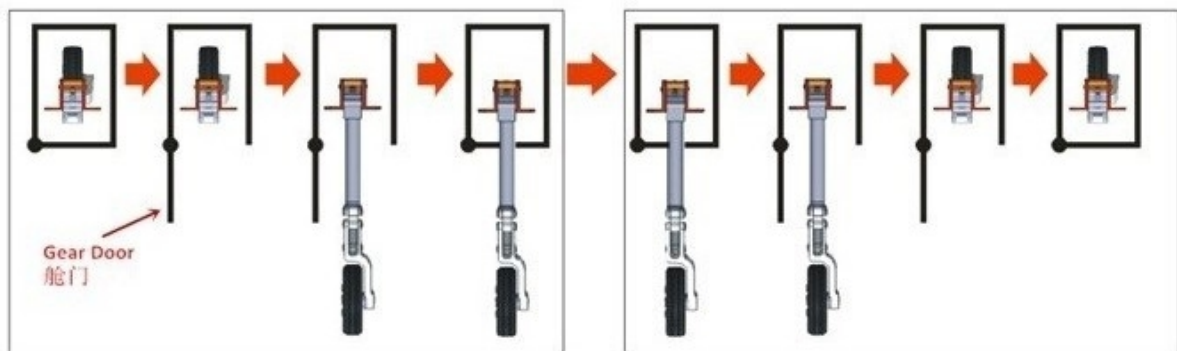


A- Technical specifications of the sequencer ER-120 V2

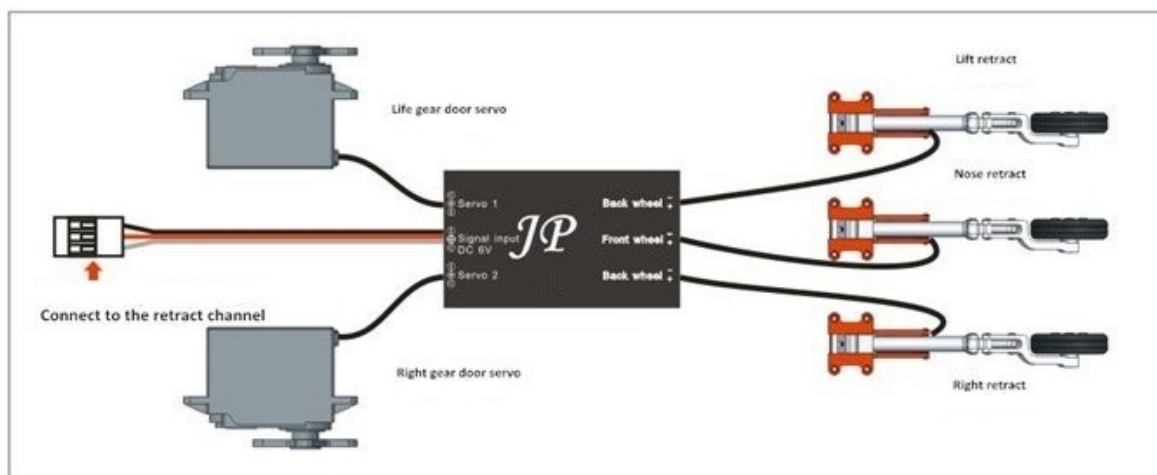
This controller is used for JP Hobby ER-005 – ER-010 – ER-120

Electric retract control operating principle :

V2 mode



Connection Diagram



JPHobby ER-120 V2 Sequencer Retract

B- Operating connection

In normal service condition,

- Switch on your radio and your receiver,
- Turn on the retract switch in retract position. The sequencer will open the gear doors then close the landing gear and finally close the doors,
- Turn on the retract switch in open position. Gear doors will open then the landing gear will go out after checking the doors fully opened and finally the doors will close,

C- Retracts installation, operation and maintenance

Installation:

Installation is simple. The retracts have a standard clamping and its installation is similar to any standard retract. An advantage of the electric retract is that installations of complex valves and air circuits are unnecessary. The retracts are supplied with long enough cable length. If the cable is no long enough, it can be extended with the correct polarity. It is advisable prolong just the necessary length to avoid voltage drops.

Operation:

Retracts must be operated always through JP Retract Control units. Never operate the retracts with direct battery or with other brands control units. The best quality of electric retracts. You will notice the advantage of not having to compress air before each flight, and you will forget the leaks.

Retracts trouble shooting:

Problems	Solutions	
The retract doesn't move	Check whether the retract controller signal lines connected correctly	The retract controller signal lines connected to the retract channel again
	Check whether the remote control signal is normal	Check the switch channels. Good debugging remote control signal
	Check whether the remote control retract channel release percentage is set to $\pm 100\%$	sure the release percentage is set to $\pm 100\%$
The gear door doesn't open	Check whether doors servo signal lines connected correctly	Follow the labeled correctly connected in the controller
	Check whether door servo damage on the receiver	Change the door servo
	Check whether three units retract are connected to the retract controller	Please connect three units retract to the control system
The units retract don't work in the same direction	Check the retract cable is correct	Reverse running horse cables properly connected to the controll
The gear door run is in wrong direction	Please check the doors servo signal lines connected to the right channel	Change the doors servo signal lines from wrong channel to other one